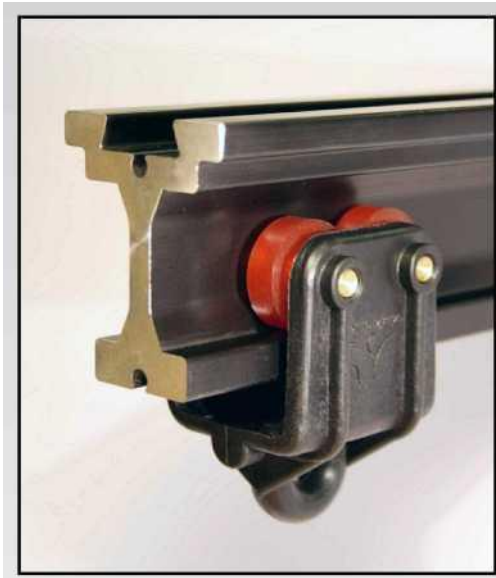


THEATER CURTAIN TRACK SYSTEMS



Theater curtain track systems

T 200 KOMBI profile



Application area:

- For horizontally moving heavy curtains
- For backdrops
- For fly systems
- For sliding doors
- For dividers
- Technological ceiling in studios

Load between two points:

Span between attachments (m)	Distributed load (kg/m)	Spot-like load (kg)
1.5	660	490
2.0	370	370
2.5	230	290
3.0	160	240
3.5	120	210

T 300 OMEGA profile



Application area:

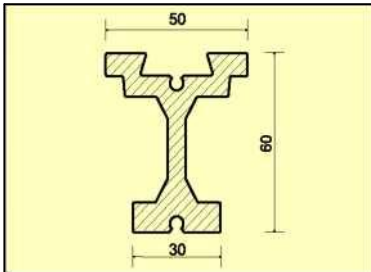
- For light and medium weight curtains
- For curving curtain tracks
- For light dividers

Load between two points:

Span between attachments (m)	Distributed load (kg/m)	Spot-like load (kg)
0.5	40	20
1.0	30	15

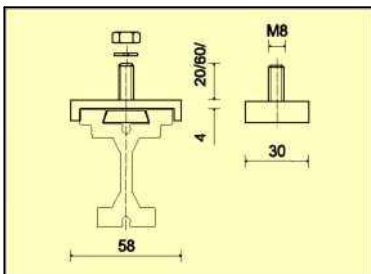
KOMBI profile

T 200-00 Track profile



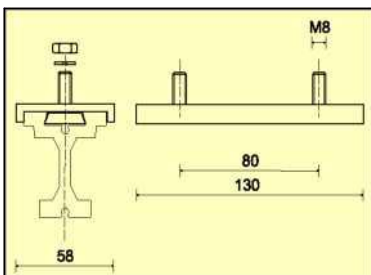
Material: AlMgSi 0.5 Heat treated anodized aluminum
 Color: black or not colored
 Max. length: 6 m
 Bending radius: $R_{\min}=0.5$ m
 To be used: as straight or curved curtain track, horizontal curtain track, track for flying structures, and to route sliding doors and dividers

T 210-00 Suspension block



Max. load: 200 kg
 Length of threaded pin: long: 60 mm short: 20 mm
 Surface treatment: black finish
 For the suspension of the Kombi profile, using M8 size screws. The length of the threaded pin can be "long" or "short" but we can ship it in a unique length if requested.

T 210-10 Extension block

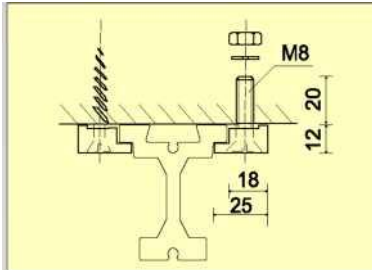


Max. load: 400 kg
 Length of threaded pin: long: 60 mm short: 20 mm
 Surface treatment: black finish
 For stiffening the binding when extending the Kombi profile. In case of larger loads, it can be used as simple suspension. The length of the threaded pin can be "long" or "short" but we can ship it in a unique length if requested.

Consultation with expert
 Planning
 Sales

KOMBI profile

T 210-25 Track mounting bracket



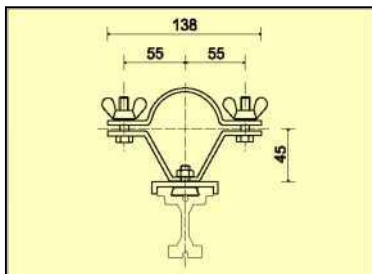
Version "A": for M8 flat-head screw

Version "B": for 6 mm diameter flat-head screw for wood

Surface treatment: black finish

To rig the Kombi profile in locations where the suspension block can't be used.

T 210-30 Hanging clamp



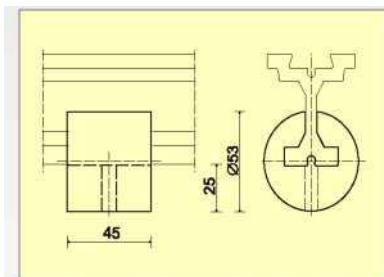
Max. load: 200 kg

Color: black

To rig the Kombi profile to the scenery pulley pipe. Size: for pipes with $\varnothing 60$ mm external diameter.

We can ship it for a unique scenery carrier size if requested.

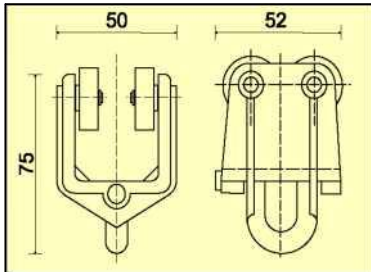
T 210-40 Track stop end



Its function is to close the ends of the curtain tracks. It is made of soft cast VULKOLLAN. It can be rigged using the threaded pin.

KOMBI profile

T 220-00 Type "U" 4 wheeled curtain pulley



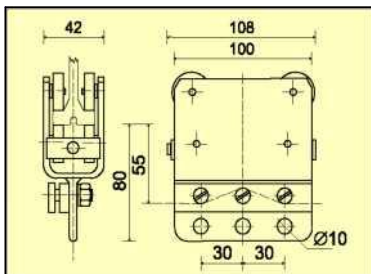
Max. load: 15 kg/ pulley

Max. motion speed: 1.5 m/s

Color: black

Mostly to operate medium and heavy curtains' horizontal motion. The pulley casing is made of high strength glass fibre reinforced plastic. The VULKOLLAN runner pulleys are covered with TEFLON sleeves, and they ensure great motion speed and silent operation.

T 220-05 Type "U" curtain master pulley



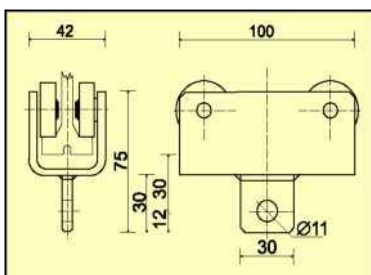
Max. load: 15 kg/ pulley

Max. motion speed: 1.5 m/s

Color: black

To rig the operating cord of horizontally moving curtains. The metal plate consists of a casing and silent plastic runner pulleys. The cord is rigged using 3 fastening screws.

T 220-10 Type "U" 4 wheeled load pulley



Max. load: 50 kg

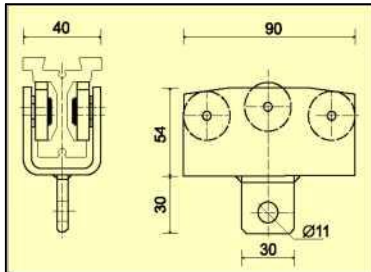
Color: black

To horizontally move loads not exceeding 50 kg. The bended metal plate consists of a casing and deep groove ball bearing runner pulleys.

Consultation with expert
Planning
Sales

KOMBI profile

T 220-15 Type "U" 4+2 load pulley

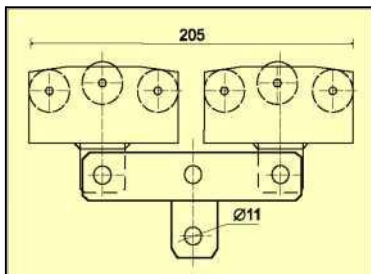


Max. load: 50 kg

Color: black

To horizontally move loads not exceeding 50 kg. Consists of bended metal casing, 4 deep groove ball bearing runner pulleys, and 2 DANAMID support pulleys.

T 220-25 Carrier structure with 4+2 load pulleys

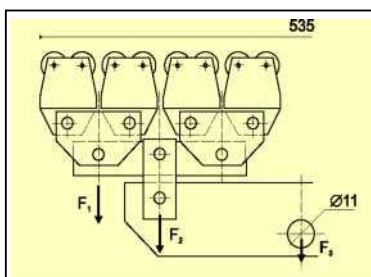


Max. load: 100 kg

Color: black

To link together 2 load pulleys when hanging loads exceed 50 kg. The carrier consists of 2 connector and 1 suspension plate. These are connected to each other and the pulleys using 10 mm pins.

T 220-30 Combined carrier structure



Max. load : $F_1=30$ kg $F_2=60$ kg $F_3=120$ kg

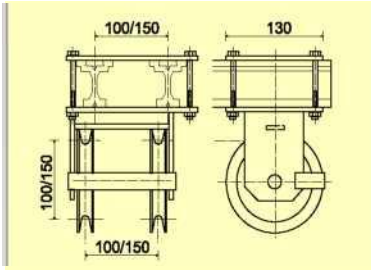
Max. motion speed: 1.5 m/s

Color: black

For horizontal operation requiring silent motion. To be used to link together minimum 2, maximum 8 curtain pulleys. The curtain can be operated without noise even at greater speeds. In case of using it as stage flying structure, please consult our designers regarding your technical plan.

KOMBI profile

T 230-00 Dual cord routing

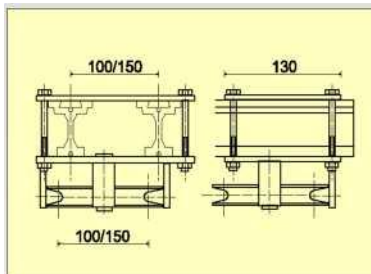


Nominal size: 100 and 150 mm

Applicable cord diameter: 6 mm

For routing the operation cords of horizontal motion curtains. The routing wheels are fitted to the size of the T 220-05 master pulley. The wheel diameters and wheel distances have 100 mm and 150 mm nominal diameter. Can be used with galvanized steel wire or perion cord.

T 230-05 Horizontal routing

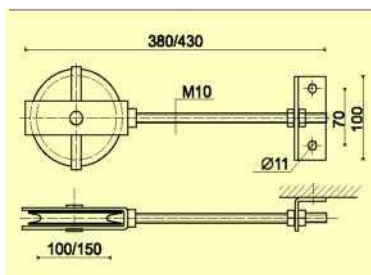


Nominal size: 100 and 150 mm

Applicable cord diameter: 6 mm

To route the operation cords of the curtains using Kombi profile. The sizes are fitted to the T 220-05 master pulley. The nominal diameter is the same as the track distance: 100 or 150 mm. Can be used with galvanized steel wire or perion cord.

T 210-40 Cord tension pulley



Nominal diameter of wheel: 100 and 150 mm

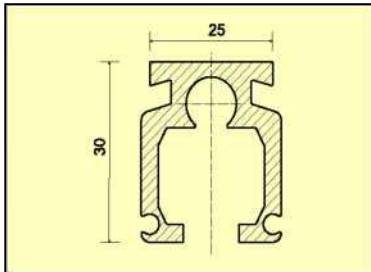
Max. setting: 200 mm

To ensure cord tension of cords used with horizontally operated curtains with two sections. Tension is achieved by using threaded spindle. The nominal diameter is the same as the distance between tracks: 100 or 150 mm.

Consultation with expert
Planning
Sales

OMEGA profile

T 300-01 Track profile



Material: AlMgSi 0.5 Heat treated anodized aluminum

Color: black or not colored

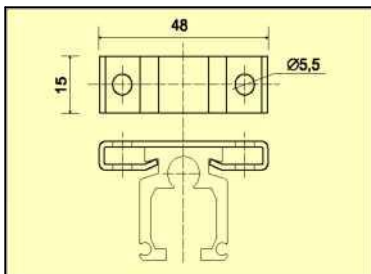
Max. length: 6 m

Bending radius for remote operation: $R_{\min}=0.5$ m

Bending radius for direct manual operation: $R_{\min}=0.2$ m

To be used: as straight or curved curtain track, or to move scenery elements or scenery walls horizontally, or as routing track of motions.

T 300-02 Mounting clamp

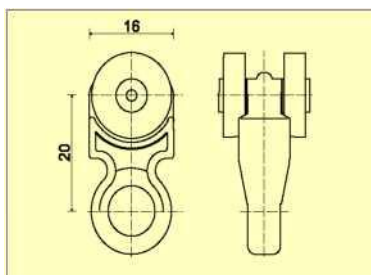


Max. load: 15 kg

Color: black

To suspend Omega profile using M5 screws, or $\varnothing 5$ mm wood or self-tapping screws.

T 300-05 Doublewheeled running pulley



Max. load: 2 kg/ pulley

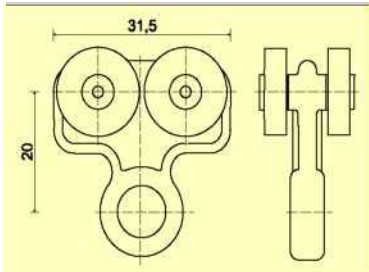
Max. motion speed: 0.5 m/s

Color: black

Mostly to operate light or medium weight curtains horizontally. The pulley body is made of high strength plastic. The plastic runner pulleys make silent operation possible.

OMEGA profile

T 300-06 4-wheeled runner pulley



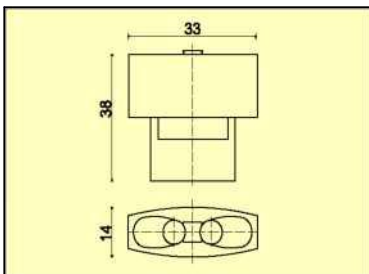
Max. load: 4 kg/ pulley

Max. motion speed: 0.5 m/s

Color: black

To operate light or medium weight curtains horizontally. The pulley body is made of high strength plastic. The plastic runner pulleys make silent operation possible.

T 300-08 Dragging block



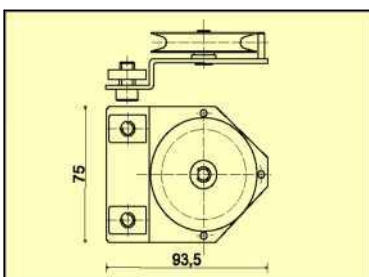
Track length and loads for using cord operated motion:

Max. for a straight track: 30 m and 150 kg curtain mass;

max. for curved track: 20 m and 100 kg curtain mass

To rig the operating cord of horizontally moving curtains. Made of: TEFLON

T 300-11 Horizontal routing



Nominal size: 100 and 150 mm

Applicable cord diameter : 6 mm

Color: black

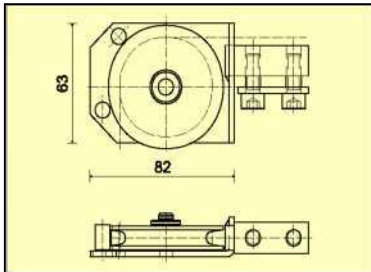
To route back the operating cord of horizontally moving curtains.

Consultation with experts
Planning
Sales

9

OMEGA profile

T 300-12 Vertical routing



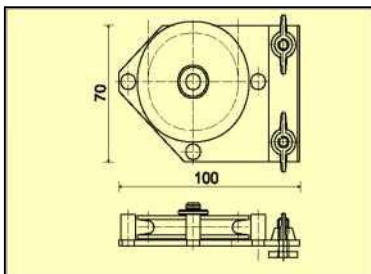
Nominal wheel diameter: 62mm

Applicable cord diameter: 6 mm

Color: black

For the vertical routing of the operating cord of horizontally moving curtains.

T 300-16 Cord tension pulley

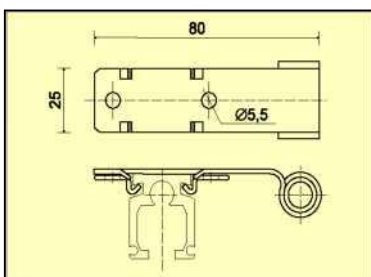


Nominal wheel diameter: 62 mm

Max. setting: 500 mm

To ensure tension of cords used with horizontally operated curtains with two sections. The tension pulley can be continuously set on the secondary track installed along the line of the back routed operating cord.

T 300-19 Routing sleeve for operating cord

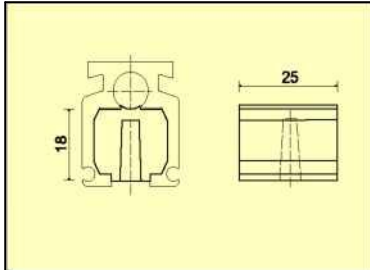


Surface treatment: black finish

To route the operating cord of horizontally moving curtains along the track. The TEFLON sleeve ensures the silent motion of the operating cord, as there is only small friction.

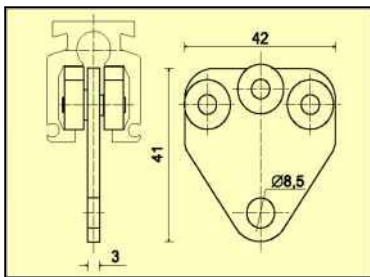
OMEGA profile

T 300-21 End stop block



Its function is to close the ends of the curtain tracks. It is made of soft cast VULKOLLAN, and can be rigged using the threaded pin.

T 300-25 Load pulley with supporting pulley

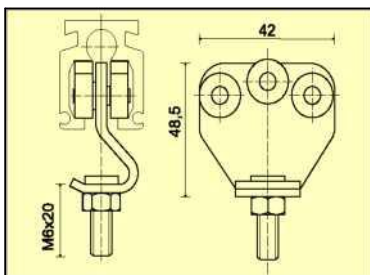


Max. load: 20 kg

Color: black

To move loads not exceeding 20 kg horizontally. The load pulley consists of a metal plate body, and 4 runner and 2 supporting deep groove ball bearing pulleys.

T 300-26 Suspension screw load pulley



Max. load: 20 kg

Color: black

To move loads not exceeding 20 kg horizontally. The load pulley consists of a metal plate body, and 4 runner and 2 supporting deep groove ball bearing pulleys. To suspend scenery pieces, doors, dividing elements.

Consultation with experts
Planning
Sales